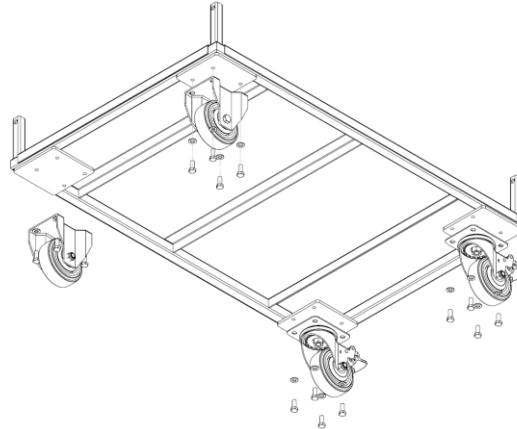
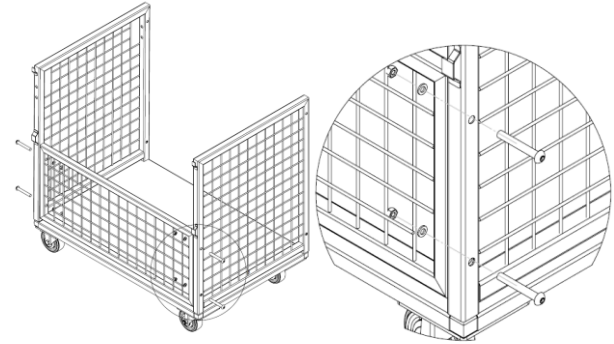




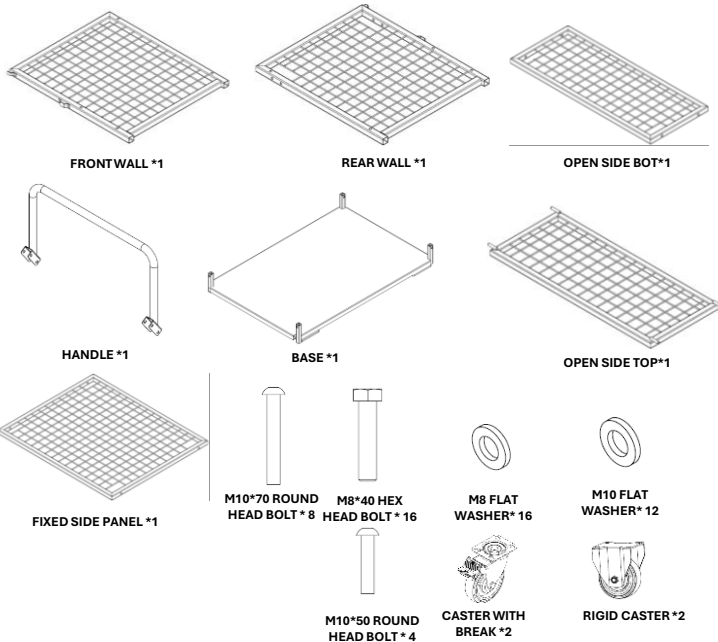
**STEP1:**  
INSTALL CASTERS TO BASE USING M8 HEX HEAD BOLTS



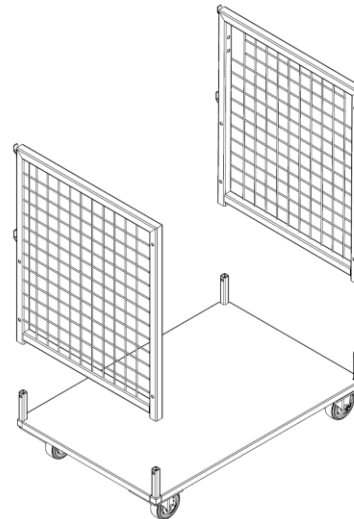
**STEP3:**  
INSTALL OPEN SIDE BOTTOM PANEL BETWEEN FRONT AND REAR WALL PANELS.  
SECURE USING M10×70 ROUND HEAD BOLTS THROUGH ALL PANELS AND BASE POSTS.  
COMPLETE ONE SIDE BEFORE INSTALLING THE OTHER SIDE.



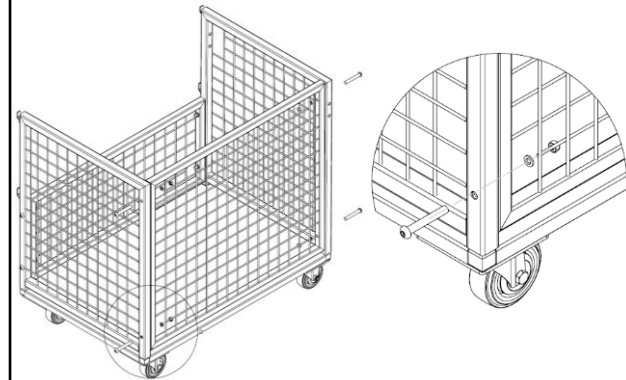
**PART LIST CHECK:**



**STEP2:**  
INSTALL FRONT AND REAR WALL PANELS ONTO BASE POSTS.

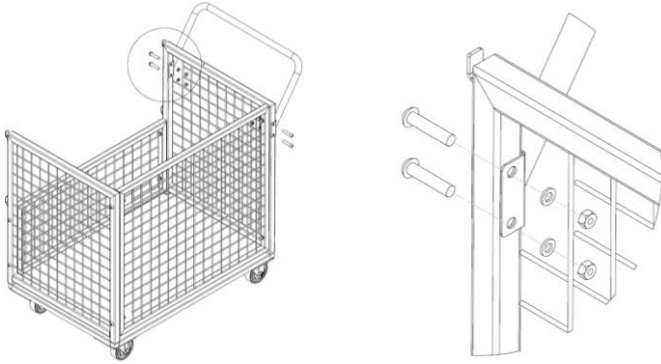


**STEP4:**  
POSITION FIXED SIDE PANEL BETWEEN FRONT AND REAR WALL PANELS.  
INSERT M10×70 ROUND HEAD BOLTS THROUGH FRONT/REAR WALL PANELS AND FIXED SIDE PANEL,  
THEN SECURE WITH NUTS AND WASHERS.



**STEP5:**

**POSITION HANDLE ONTO REAR WALL PANEL.INSERT M10×50 ROUND HEAD BOLTS THROUGH HANDLE AND PANEL, THEN SECURE WITH FLAT WASHERS AND NUTS.**



**STEP6:**

**INSTALL OPEN SIDE TOP PANEL AT AN ANGLE.ENGAGE REAR PINS FIRST, THEN LOWER FRONT SIDE INTO POSITION AND ALIGN PANEL CENTRALLY.**

