



High Lift 1000kg Powder Coated Pallet Jack (HLR101) Instruction Manual



CAUTION!

Owner and Operator **MUST** read and understand this manual
before using the Pallet Jack.

SPECIFICATIONS

Model	HLR101	
Rated lifting capacity	1000 kgs/1500kgs	
Max. Fork height	800 mm	
Min. Fork height	85 ±2 mm	
Fork length	1150 mm	
Fork width (outside)	540 mm	
Pump times	Fast: 28	Slow: 78
Descending speed	≤0.1 mm/second	
N.W.	110 kgs	115kgs

SAFETY INSTRUCTIONS

1. This pallet Jack should be used in accordance with this Instruction Manual.
2. Do not put your hands or feet under the forks at any time.
3. Do not operate on a sloped surface.
4. Quickly lifting loads over 300 kg is prohibited.
5. Always place loads centrally on the forks. An uneven load distribution can make the pallet jack unstable and increase the risk of accidents.
6. This pallet jack is intended for transporting goods only. Riding or allowing passengers is not permitted.
7. It is recommended to the operator(s) of this pallet jack to wear proper protective foot wear i.e safety boots.
8. Any and all modifications will adversely affect the safe operation of the pallet jack.
9. Any manipulation of the pressure relief valve is strictly prohibited.
10. Assembly, adjustment, and maintenance should only be carried out by a trained professional who is familiar with Australian safety standards and regulations relevant to the use, operation, and maintenance of hand-operated pallet jacks.

INSTALLATION & ADJUSTMENT

Breather Valve

To prevent oil leakage during transportation, the breather is replaced with a metal sealing plug at the factory. Before using the pallet jack, replace the plug with the supplied breather.

To do this: Unscrew the plug and install the breather. This allows the oil tank to remain properly ventilated during operation.

Handle

During transportation, the pallet jack handle is packed separately. It must be properly installed and adjusted before use.

Handle installation: Take three M10 nuts and the hex wrench from the spare parts bag. Select the handle that matches the truck, ensuring the fitting numbers correspond.

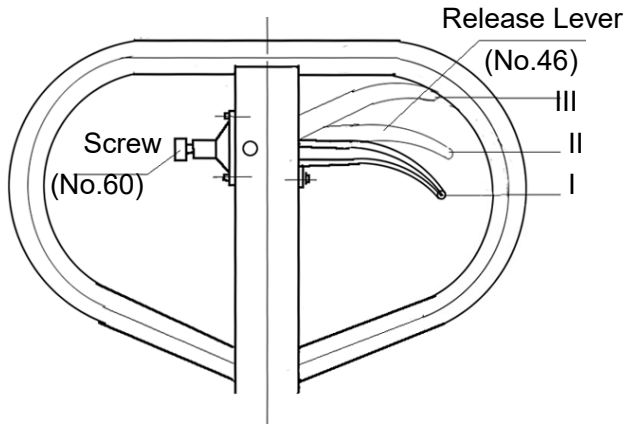
Attach the handle to the handle base (Part No.55) using the three M10 nuts and spring washers. Tighten securely.

Insert the chain's eye bolt (Part No.36) into the slot at the front end of the pendulum arm (Part No.124).

Handle adjustment

There are 3 different positions with different functions for the Release Lever
(See picture 1)

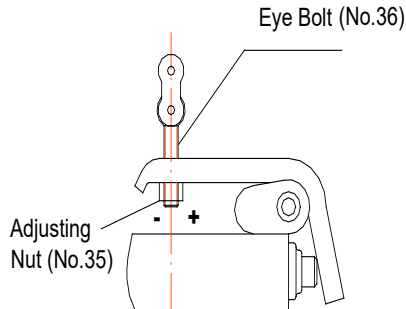
PICTURE 1



- Position I:** Quick lifting for fork.
- Position II:** Slow lifting for fork
- Position III:** Descending for fork

Before using the pallet Jack, make sure to test the different functions by putting the release Lever in the 3 different positions. If it does not function properly, then adjust the Lock Nut by using the following process (see picture 2).

PICTURE 2



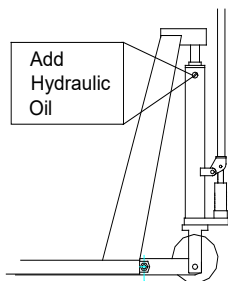
Problems	Turning direction of Lock Nut
Fork not lifted up	- (clockwise)
Fork not lowering down	+ (counter-clockwise)

How to release the air from the pump

When pushing the handle down, the fork can't be lifted instantly.

Loosen the Screw on the pump while pushing the handle down slowly to release the air from the pump, then tighten the screw (see picture 3).

PICTURE 3

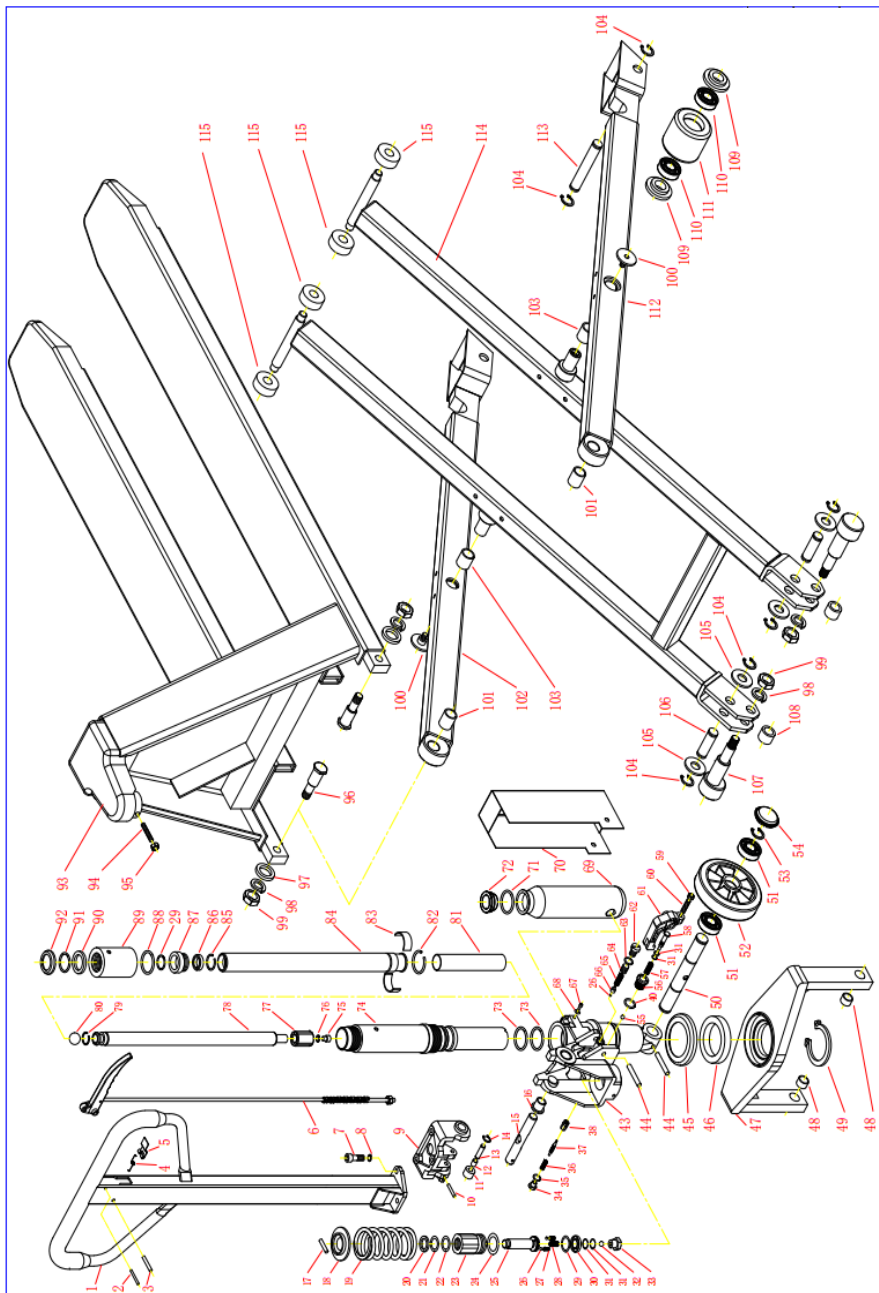


When to add oil

If the fork can't be pumped up to its rated highest position, you may have to add hydraulic fluid into the oil tank. The hydraulic fluid to be used must have a quality of ISO VG22 or equivalence. **- Do not mix different fluids!**

TROUBLE SHOOTING GUIDE

Items	Symptom	Possible cause	Solution
1	Fork cannot be pumped up	1. Low oil level in oil tank. 2. Exist air in the hydraulic system. 3. Pendulum arm nut is not adjusted properly.	1. Add proper hydraulic oil. 2. Fast operating the handle for several times. Bleed the system. 3. Adjust pendulum arm screw. (see picture 2)
2	Fork can't be released down	1. Fork blocked. 2. Pendulum arm nut not adjusted properly.	1. Check and remove the block. 2. Adjust pendulum arm nut properly. (see picture 2)
3	Fork can't be pumped up to rated highest position.	Oil is not enough.	Add hydraulic oil. (see picture 3)



NO	Description	QTY.	NO	Description	QTY.
1	handle	1	35	O-ring	1
2	spring pin	2	36	spring	1
3	spring pin	1	37	plungle	1
4	spring	1	38	high press valve	1
5	plate	1	43	valve body	1
6	lever	1	44	spring pin	2
7	screw	3	45	bearing cover	1
8	spring washer	3	46	bearing	1
9	handle stand	1	47	table base	1
10	spring pin	1	48	bushing	2
11	rolier	1	49	snap ring	1
12	bushing	1	50	shaft	1
13	roller pin	1	51	bearing	4
14	snap ring	2	52	wheel	2
15	handle shaft	1	53	snap ring	2
16	bushing	2	54	wheel cover	2
17	pin	1	55	steel ball	1
18	spring hat	1	56	realease valve	1
19	spring	1	57	spring	1
20	seal ring	1	58	nozzle	1
21	Y-ring	1	59	nut	2
22	O-ring	1	60	screw	1
23	pump plungle	1	61	ram	1
24	washer	1	62	screw	1
25	piston plungle	1	63	O-ring	1
26	steel ball	2	64	valve	1
27	spring	2	65	spring	1
28	spring	1	66	valve base	1
29	O-ring	2	67	screw	2
30	cover	1	68	washer	2
31	O-ring	2	69	oil sac	1
32	steel ball	2	70	cover	1
33	screw	1	71	O-ring	2
34	screw	1	72	oil sac hat	1

73	o-ring	2	109	washer	4
74	cylinder	1	110	bearing	4
75	screw	1	111	load wheel	2
76	spring washer	1	112	right leg	1
77	piston	1	113	shaft	2
78	piston rod	1	114	lifting frame	1
79	steel ring	1	115	roller	4
80	steel ball	1			
81	steel sleeve	1			
82	steel ring	1			
83	piston ring	1			
84	internal cylinder	1			
85	steel ring	1			
86	Y-ring	1			
87	top collar	1			
88	O-ring	1			
89	cylinder head	1			
90	Y-ring	1			
91	o-ring	1			
92	dust seal	1			
93	fork	1			
94	screw	1			
95	locked nut	1			
96	fork axle	2			
97	sleeve	2			
98	spring washer	4			
99	locked nut	4			
100	shaft screw	2			
102	left leg	1			
103	bushing	2			
104	snap ring	8			
105	washer	4			
106	pin	2			
107	eccentric shaft	2			
108	sleeve	2			

