





REFRIGERATION CASTORS

This range has been designed specifically for use on catering refrigeration units, merchandisers, food services and preparation counters. They are designed to be a compatible replacement product for most commercial equipment and major brands.

- Nylon wheels
- Plate or bolt hole mounting options

UP TO
80KG
CAPACITY

									
Diameter (mm)	Width (mm)	Wheel Type	Bearing Type	Load Capacity (kg)	Height (mm)	Swivel Radius (mm)	With Brake (mm)	Thread Size	Swivel Code
75	30	Nylon	Plain	80	100	62	65	3/4" BSW	S3298
75	30	Nylon	Plain	80	107	71	105	3/4" BSW	S3300
75	30	Nylon	Plain	80	90	62	65	Plate	S3296



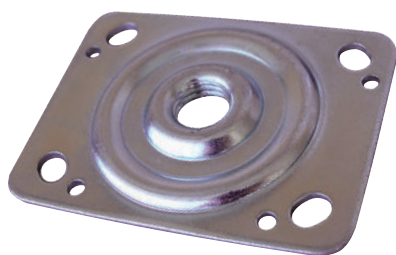
S3296B



S3300



S3298B

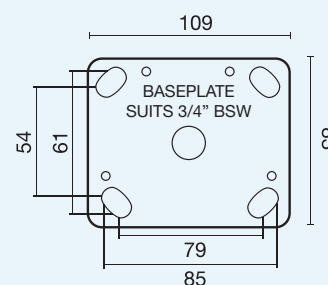


REFPLT10983
Optional baseplate to suit New Zealand style SKOPE brand equipment

Brake Options

B = Brake

To order castors with Brake add B to end of swivel code e.g. S3296B



Baseplate Dimensions for Refrigeration Castors

STAINLESS STEEL CATERING LEGS

Catering legs are suitable for use on catering equipment such as display fridges, preparation tables and bain maries. They are made from grade 304 stainless steel and are interchangeable with leading manufacturers. The use of catering legs allows for easy access underneath equipment to ensure a clean and hygienic environment. They feature an adjusting design, allowing for the quick levelling of your bench or fridge.

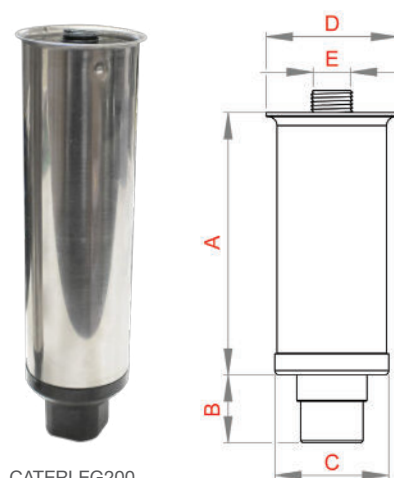
- Grade 304 stainless steel
- Adjustable for quick levelling

Height mm	Adjustment Height (mm)	Tube Diameter (mm)	Flange (mm)	Thread	Load Capacity (kg)	Product Code
75	100-125	51	62	3/4" BSW	400	CATERLEG100
100	125-150	51	62	3/4" BSW	400	CATERLEG125
120	150-175	51	62	3/4" BSW	400	CATERLEG150
175	200-225	51	62	3/4" BSW	400	CATERLEG200
225	250-275	51	62	3/4" BSW	400	CATERLEG250



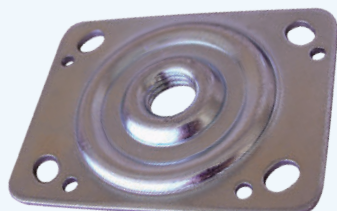
CATERLEG100

CATERLEG150



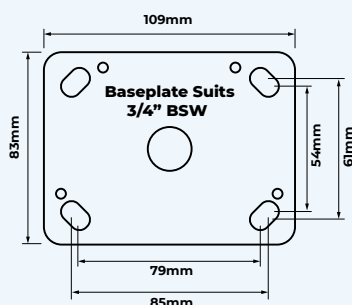
CATERLEG200

*REFADJLEG146 has a thread that extends 9mm above the flange. All of the other models sit flat once a baseplate is threaded on.



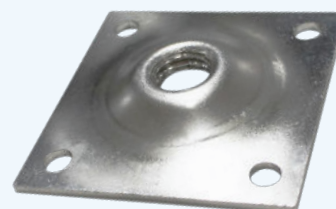
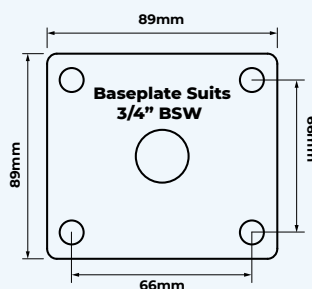
REFPLT10983

Compatible with New Zealand style SKOPE brand display fridge units and bain maries. Plate is in zinc plated mild steel. **Not suitable with ablove leg models.**



CATERPLATEZP

Compatible with major manufacturer display fridges, preparation benches, bain maries, display cabinets etc. This baseplate is made from zinc plated mild steel.



CATERPLATESS

Compatible with major manufacturer display fridges, preparation benches, bain maries, display cabinets etc. This baseplate is made from grade 304 stainless steel.

