

STAINLESS STEEL CATERING LEGS

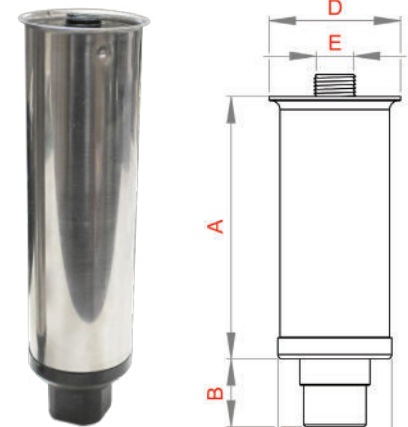
Catering legs are suitable for use on catering equipment such as display fridges, preparation tables and bain maries. They are made from grade 304 stainless steel and are interchangeable with leading manufacturers. The use of catering legs allows for easy access underneath equipment to ensure a clean and hygienic environment. They feature an adjusting design, allowing for the quick levelling of your bench or fridge.

- Grade 304 stainless steel
- Adjustable for quick levelling



CATERLEG100

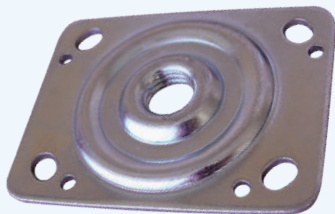
CATERLEG150



CATERLEG200

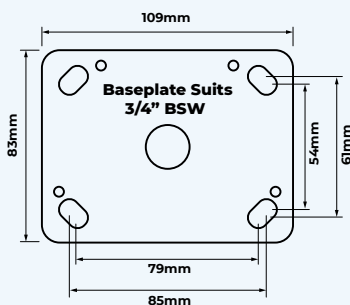
Height mm	Adjustment Height (mm)	Tube Diameter (mm)	Flange (mm)	Thread	Load Capacity (kg)	Product Code
75	100-125	51	62	3/4" BSW	400	CATERLEG100
100	125-150	51	62	3/4" BSW	400	CATERLEG125
120	150-175	51	62	3/4" BSW	400	CATERLEG150
175	200-225	51	62	3/4" BSW	400	CATERLEG200
225	250-275	51	62	3/4" BSW	400	CATERLEG250

*REFADJLEG146 has a thread that extends 9mm above the flange. All of the other models sit flat once a baseplate is threaded on.



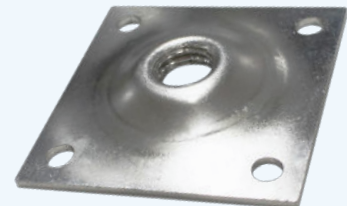
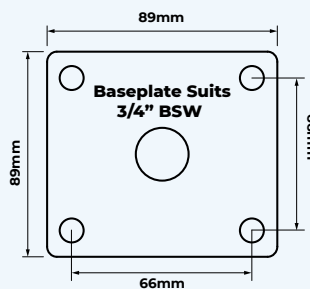
REFPLT10983

Compatible with New Zealand style SKOPE brand display fridge units and bain maries. Plate is in zinc plated mild steel. **Not suitable with above leg models.**



CATERPLATEZP

Compatible with major manufacturer display fridges, preparation benches, bain maries, display cabinets etc. This baseplate is made from zinc plated mild steel.



CATERPLATESS

Compatible with major manufacturer display fridges, preparation benches, bain maries, display cabinets etc. This baseplate is made from grade 304 stainless steel.

