

HEAD OFFICE:

590 Clayton Rd,
Clayton South,
VIC 3169, Australia

TEL: (61) 3 9551 2233

FAX: (61) 3 8692 8695

richmondau.com

GTR156 Disconnect and Test Guide.

STOP: If you are not certain your gate opener motor is a Richmond Wheel & Castor Co. GTR156 model; before removing the cover, please take a photograph of the gate motor and send to the gate motor support team. We will confirm if your gate motor is the affected GTR156 model. Your photograph can be sent by visiting www.richmondau.com/gtr156-safety-check/ , completing the form and uploading the image.

This guide will show you how to safely perform a self-check on your GTR156 sliding gate motor.

If you are uncomfortable or unsure about performing the inspection, please contact Richmond Wheel and Castor to discuss further on 1300 474 246.

Safely removing power to the motor.

- Turn off the power at the power point.
- Disconnect the 240 volt plug and place the plug in a dry container (bag etc.)
- Open the manual release lever
- Move the gate to the open position, while keeping the spring free of any contact.
- Close and lock the manual release lever.

Quality checking the motor

- Remove the two screws on each side of the cover.
- Remove the plastic housing surrounding the motor.
- The wiring can be inspected visually through the clear PC board cover.
- Check the wiring matches the image below.
Take a photo and send this to a Richmond technician for final checking by going to www.richmondau.com/gtr156-safety-check/ and following the steps.

Images of each step for checking the motor are on the following pages. Ensure that power is off to the motor before removing the cover or performing any checks inside the case.



1. Remove the two screws on each side of the cover

If you are unsure if you have a GTR156 gate motor, take a photo, fill in the form below and upload a photo of your motor. A Richmond technician will be in touch ASAP to advise.



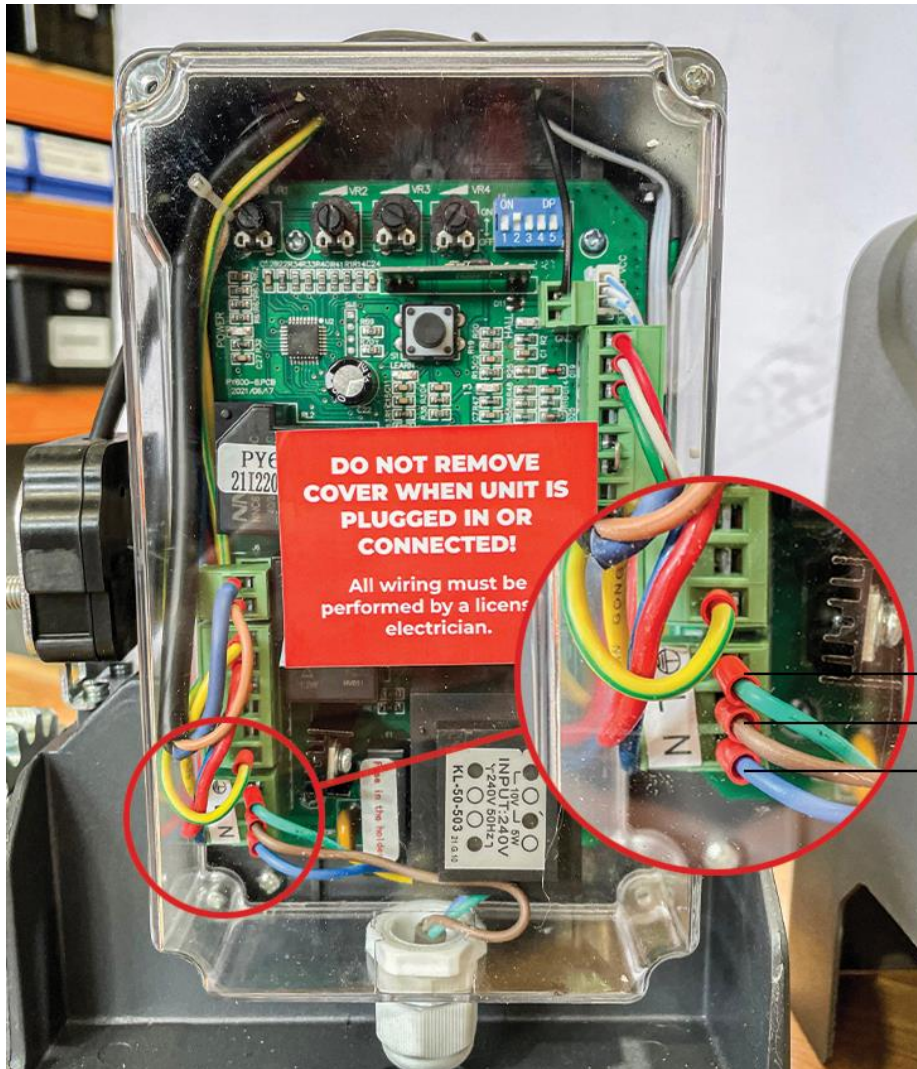
2. Remove the plastic housing surrounding the motor



3. The wiring can be inspected visually through the clear PC board cover

4. Check the wiring matches the image below

Check the wiring matches the image below. If your gate matches the image, it is not affected. If you are unsure or want confirmation that it matches, please upload a photo, and fill in your details via the [online form](#) and a member of our team will get back to you.



Green with yellow stripe
 Brown
 Blue



HEAD OFFICE:

590 Clayton Rd,
Clayton South,
VIC 3169, Australia

TEL: (61) 3 9551 2233

FAX: (61) 3 8692 8695

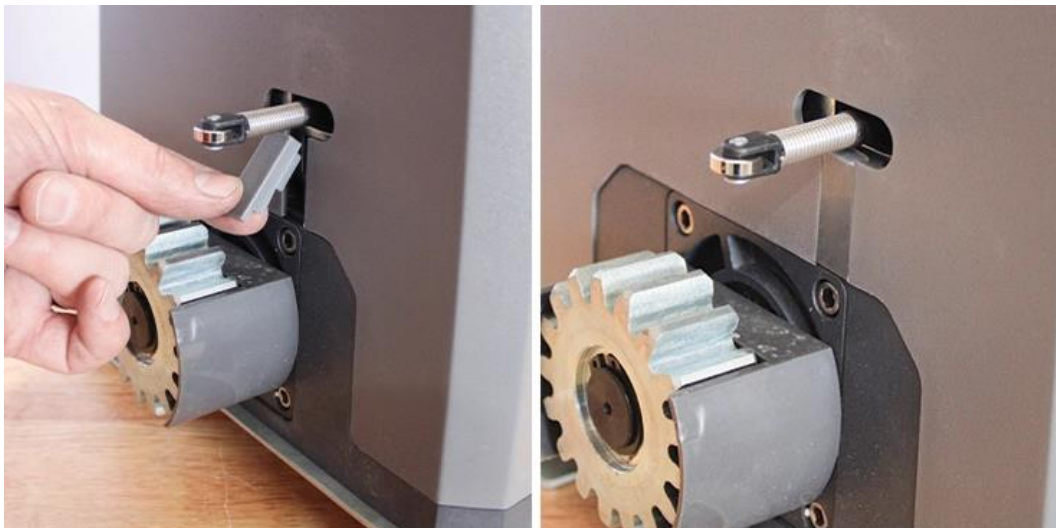
richmondau.com

WARNING: Do not remove the transparent plastic cover or attempt to repair the gate opener/motor.

If your wires do not match what is shown, take a photo and contact your nearest Richmond store as soon as possible.

5. Replace the motor cover

Replace the cover, ensuring the rubber grommet is in place. Then install the two screws on each side of the cover to fasten it into place.



6. Take a photo and send this to a Richmond technician for final checking

Take 2 photos, and send them to a Richmond technician for final checking via the online form, by visiting www.richmondau.com/gtr156-safety-check/

The photos to be sent are:

- Image of wiring
- The gate motor once the cover has been re-fitted.

