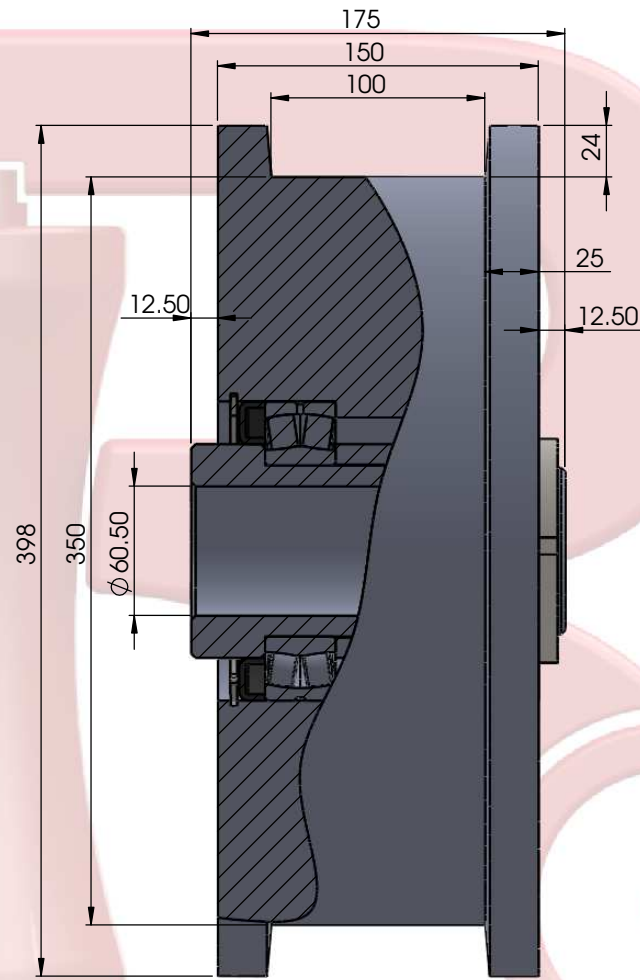
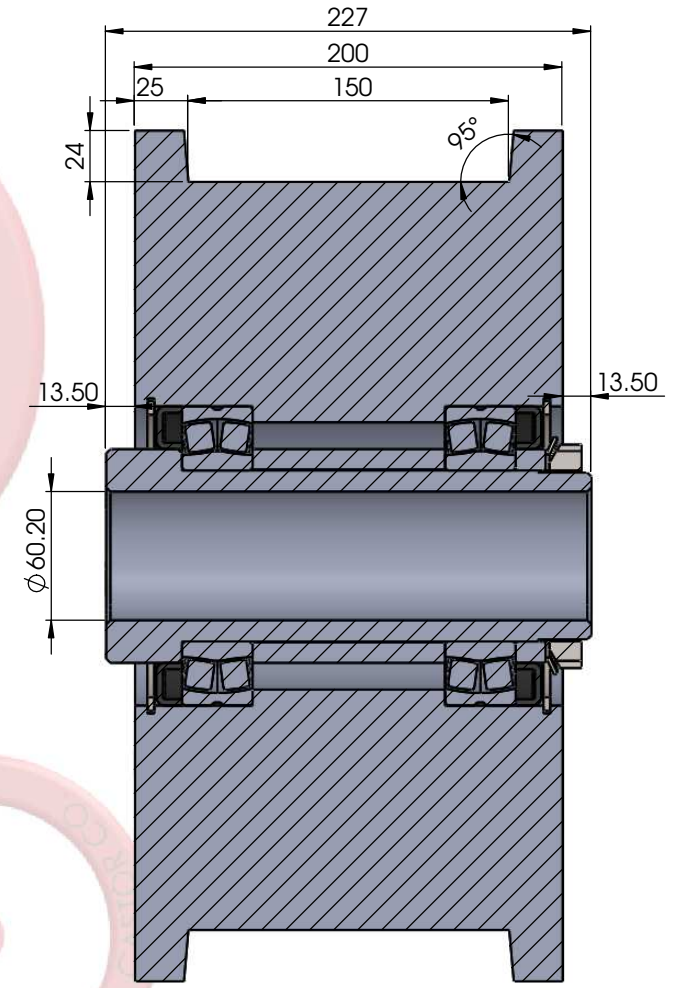


DFST350X75 (80MM SPHERICAL ROLLER BEARINGS TO SUIT M60 PRECISION BOLT)



DFST350X100 (80MM SPHERICAL ROLLER BEARINGS TO SUIT M60 PRECISION BOLT)



DFST350X150 (80MM SPHERICAL ROLLER BEARINGS TO SUIT M60 PRECISION BOLT)

PROPRIETARY AND CONFIDENTIAL
 THE INFORMATION CONTAINED IN THIS DRAWING IS THE SOLE PROPERTY OF Richmond Wheel & Castor Co. ANY REPRODUCTION IN PART OR AS A WHOLE WITHOUT THE WRITTEN PERMISSION OF Richmond Wheel & Castor Co. IS PROHIBITED.

| | NAME | SIGNATURE | DATE |
|--|-------|-----------------------------|------------|
| DRAWN | BREON | BWM | 16/10/2019 |
| CHK'D | SY | SY | 16/10/2019 |
| APP'VD | RAY | RW | 16/10/2019 |
| MFG | SY | SY | 16/10/2019 |
| Q.A | BARRY | BN | 16/10/2019 |
| UNLESS OTHERWISE SPECIFIED: DIMENSIONS ARE IN MILLIMETERS TOLERANCES TO 0.25MM | | DEBUR AND BREAK SHARP EDGES | |



TITLE: **RICHMOND WHEEL & CASTOR CO.**
 DWG NO: **SOLID STEEL DOUBLE FLANGE WHEELS 350MM**

A3

WEIGHT:

SHEET 12 OF 13