

STAINLESS EXCEL PLATE CASTORS

SUITABLE FOR WET ENVIRONMENTS
FULL STAINLESS CONSTRUCTION



S4144B



S4114



S5142B

| Diameter (mm) | Width (mm) | Wheel Type | Wheel Code | Bearing Type | Load Capacity (kg) | Height (mm) | Swivel Radius (mm) | With Brake (mm) | Rigid Code | Swivel Code |
|---------------|------------|-------------------|------------|----------------|--------------------|-------------|--------------------|-----------------|--------------|---------------|
| 100 | 35 | Reb Poly | RP4072 | SS Roller | 200 | 133 | 92 | 115 | R4145 | S4144 |
| 100 | 32 | High Temp Polymer | HT479 | Ball | 200 | 133 | 92 | - | R4127 | S4126* |
| 100 | 35 | Nylon | NY401 | Plain | 200 | 133 | 92 | 115 | R4143 | S4142 |
| 100 | 36 | Aluminium | AL473 | Oiless Du Bush | 200 | 133 | 92 | - | R4115 | S4114* |
| 100 | 36 | Aluminium | AL474 | Oiless Du Bush | 200 | 133 | 92 | - | R4141 | S4140* |
| 100 | 35 | High Temp Polymer | HT412 | Plain | 200 | 133 | 92 | 115 | R4139 | S4138* |
| 125 | 35 | Reb Poly | RP5072 | SS Roller | 200 | 158 | 158 | 120 | R5145 | S5144 |
| 125 | 35 | Nylon | NY501 | Plain | 200 | 158 | 158 | 120 | R5143 | S5142 |
| 150 | 50 | Reb Poly | RP6072 | SS Roller | 300 | 187 | 127 | 150 | R6145 | S6144 |
| 150 | 50 | Nylon | NY652 | Plain | 300 | 187 | 127 | 150 | R6143 | S6142 |
| 150 | 50 | Nylon | NY655 | SS Roller | 300 | 187 | 127 | 150 | R6141 | S6140 |
| 200 | 50 | Reb Poly | RP8072 | SS Roller | 300 | 237 | 156 | 150 | R8145 | S8144 |
| 200 | 45 | Nylon | NY800 | Plain | 380 | 237 | 156 | 150 | R8143 | S8142 |
| 200 | 50 | Nylon | NY802 | SS Roller | 380 | 237 | 156 | 150 | R8141 | S8140 |
| 200 | 43 | High Temp Polymer | HT800 | Plain | 380 | 237 | 156 | 150 | R8149 | S8148 |

Brake Options

B = Brake

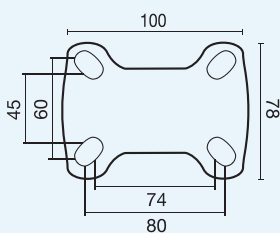
To order castors with a Brake add B to end of swivel code e.g. S5144B

indicates castors suitable for high/low temperature applications.

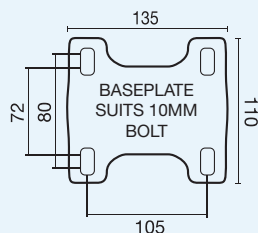
* indicates castors not available with brake

Part numbers in red indicate an M2 baseplate. All other part numbers in this series have an M3 baseplate.

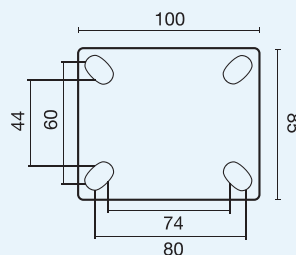
Standard Baseplate Dimensions & Drilling Patterns for Stainless Steel Excel Castors



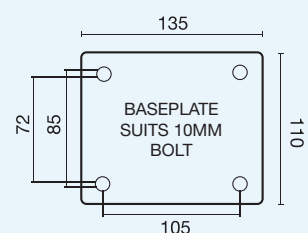
Baseplate for 100-125mm Rigid Castors



Baseplate for 150-200mm Rigid Castors



Baseplate for 100-125mm Swivel Castors



Baseplate for 150-200mm Swivel Castors