



Scan for additional information

GTR202 Hard-Wire Push Button



Compatible with the following Richmond motors.		
Sliding / Cantilever Motors		
GTR156 & GTR212 ✓	GTR061 & GTR207 ✓	
Swing Motors		
GTR099 ✓	GTR058 ✓	GTR062 & GTR078 ✓
GTR500 & GTR501 ✓	GTR502 & GTR503 ✓	
! Compatible with any gate/garage opener that allows a push button function.		

Technical Specs:

- **IP54 rating. Suitable for outdoor use.**
- **Product Dimensions: 70mm W x 70mm D x 70mm H.**
- **Contact Type: Single NO (normally open) relay. Momentary action switch.**
- **Hard-wired unit (2 core), no batteries required (wire not included).**



GTR126
2-core .03mm accessory cable

GTR220
2-core 1.5mm accessory/power cable

2-core and 5-core Accessories Cable available by the metre.

GTR122
5-core .03mm accessory cable

GTR216
5-core 2.0mm accessory/power cable



The GTR202 Hard-Wire Push Button:

The GTR202 Hard-Wire Push Button is a simple one-touch button for operating your automated gate or garage door.

Manufactured in a weather-proof case, the unit is suitable for use outdoors and easily mount to a wall or post. Multiple pushbuttons can be used to allow convenient entry and exit from a property.

Use with an automated system

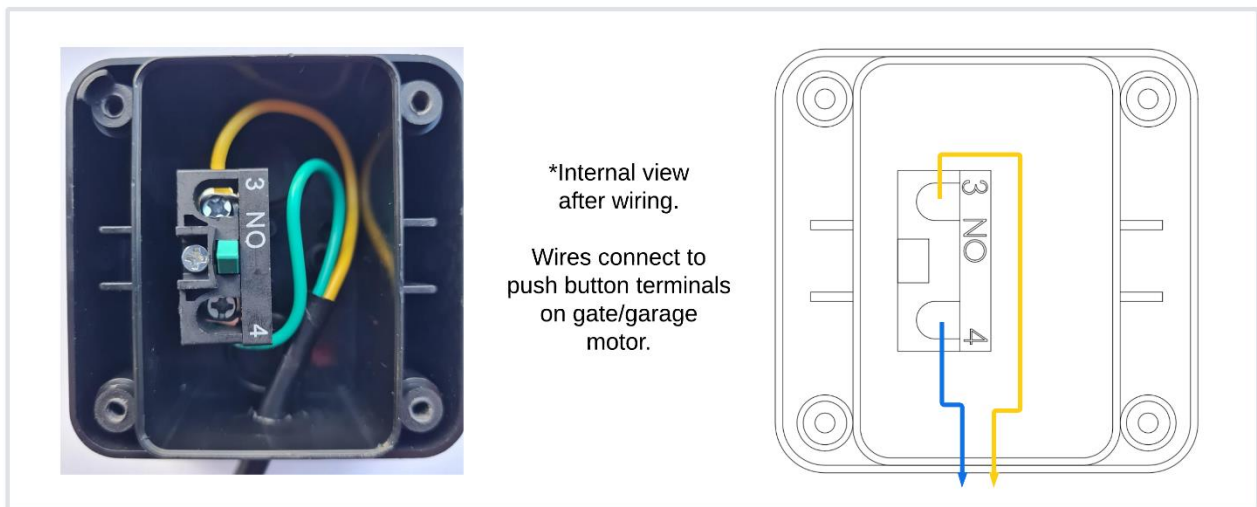
Most automated gate and garage systems will have an auto-close feature that closes the gate/garage after entry/exit. This removes the need to manually close the gate/garage.

If auto-close is not used, the push button will operate the Open, Stop and Close functions with each button press.

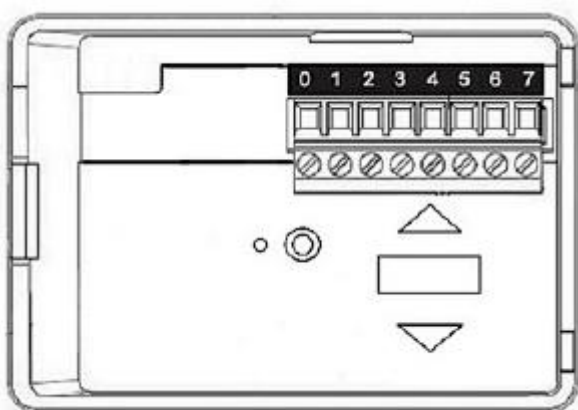
Connecting the GTR202 to a Gate or Garage Opener

Below is an example of how the GTR202 hard-wire push button can be wired into a gate or garage opener.

1. Drill a small hole in one of the access ports on the side of the push button.
The hole and cable should always be located on the underside to minimise water getting into the housing.
2. Feed a 2-core cable through the hole and connect a single wire to each terminal as shown below.
The internal switch can be unscrewed and removed for easier connection if required.
*A cable tie around the cable will stop it being pulled out of the casing. You can also silicon around the cable.
3. Connect the cable to the push button or entry terminals on your gate or garage opener.
An example has been included below.
4. Multiple push buttons can be fitted so that entry and exit buttons are always conveniently placed.



For the below example, the GTR202 push button would be wired as follows:



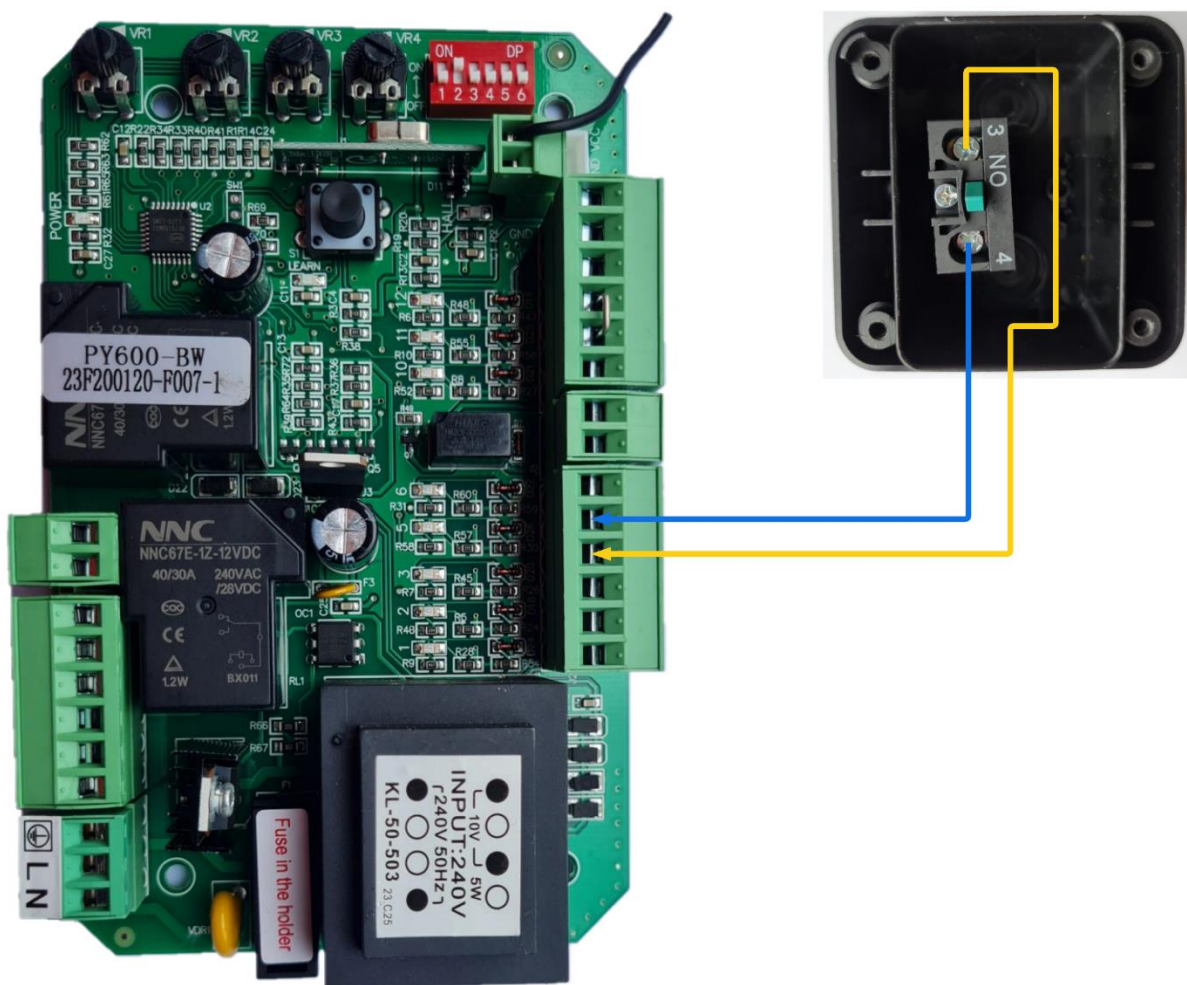
Gate/Garage Automated Opener Terminals		
Terminal	Function	Description
0	Ground	24volt DC Negative
1	24vDC+	24volt DC Positive
2	O/S/C or Open	Dry Contact (Open/Stop/Close)
3	Stop	Dry Contact (Close)
4	Close	Dry Contact (Stop)
5	COM	Dry Contact Common Terminal
6		Not used
7		Not used

Connection

GTR202 Terminal 3 into Terminal 2 (O/S/C or Open)

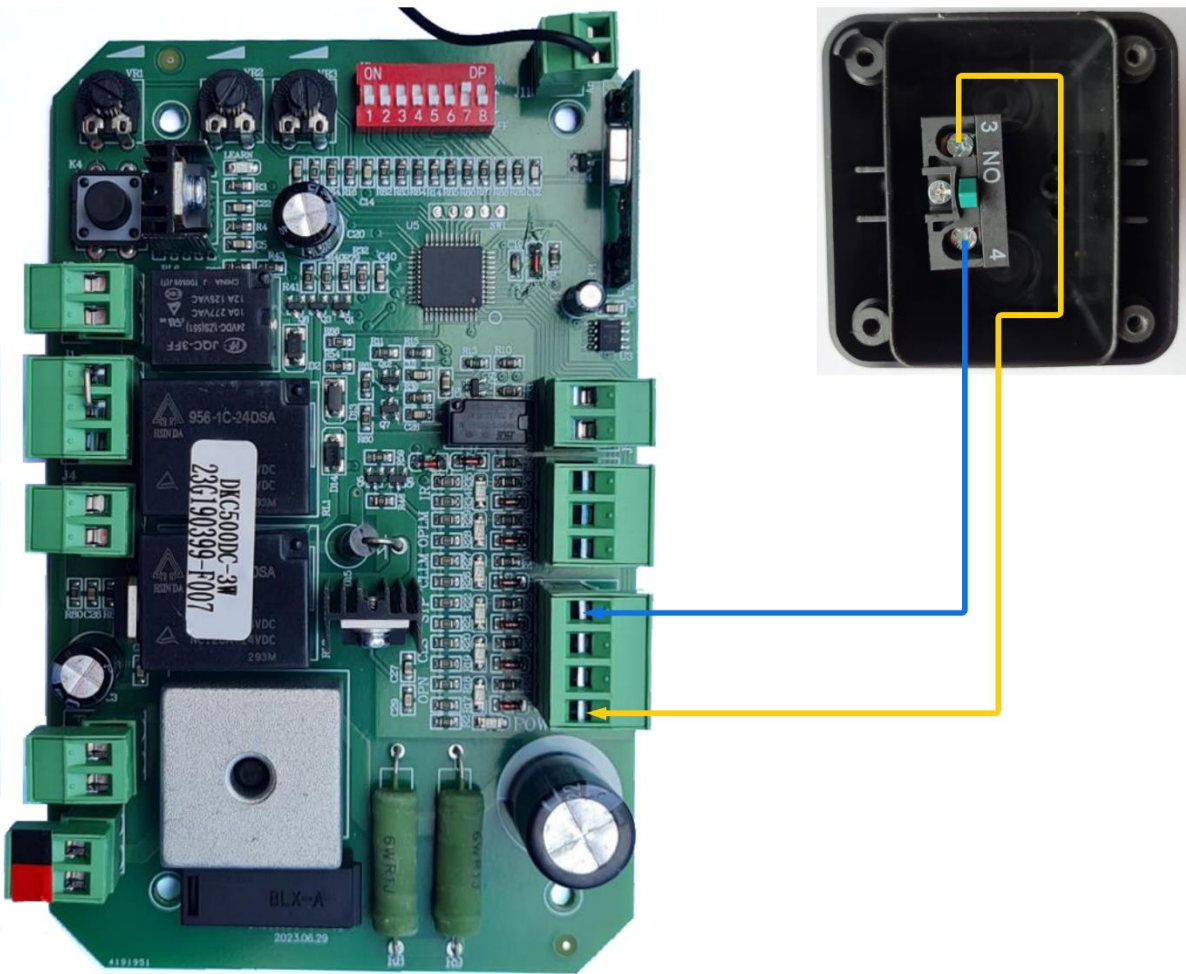
GTR202 Terminal 4 into Terminal 5 (COM)

GTR156 or GTR212 slide motor connection



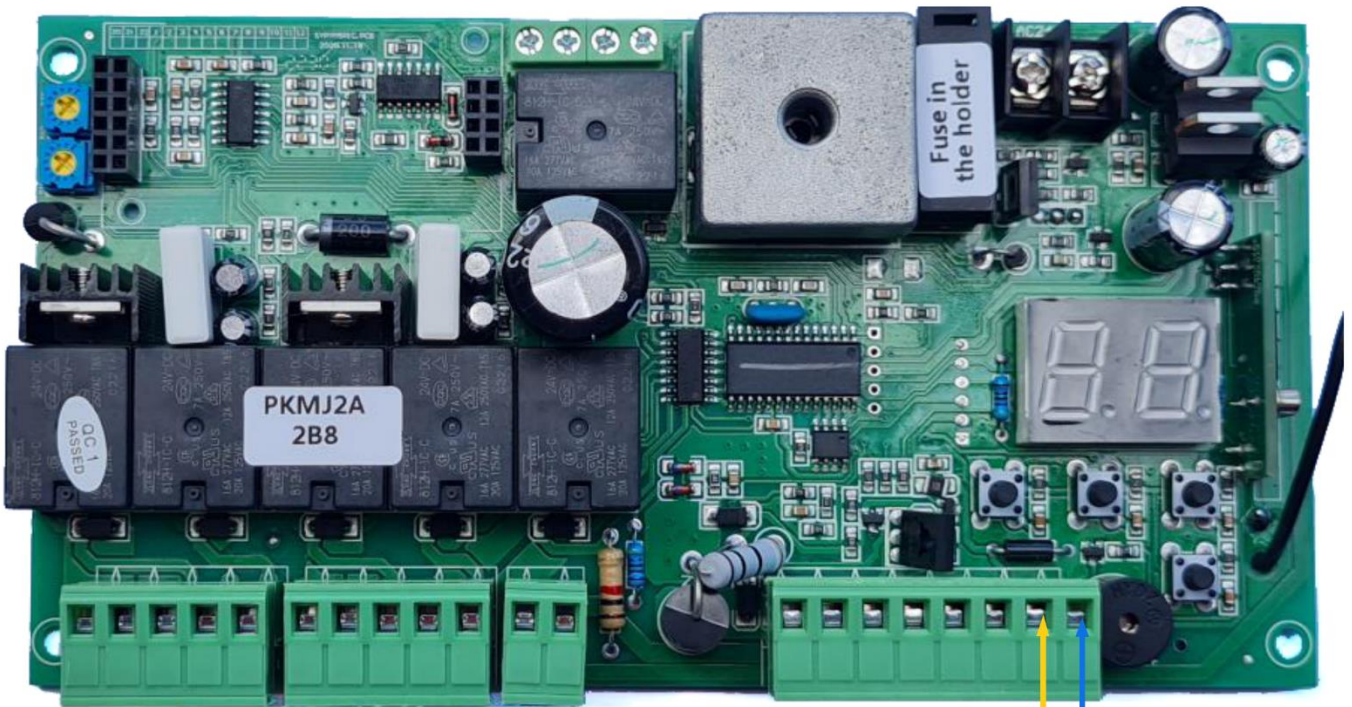
<u>GTR202 Terminal</u>	<u>GTR156/212 terminal</u>
Terminal 3	Terminal 4 (COM)
Terminal 4	Terminal 5 (O/S/C)
** No further settings adjustments needed *	

GTR061 or GTR207 slide motor connection

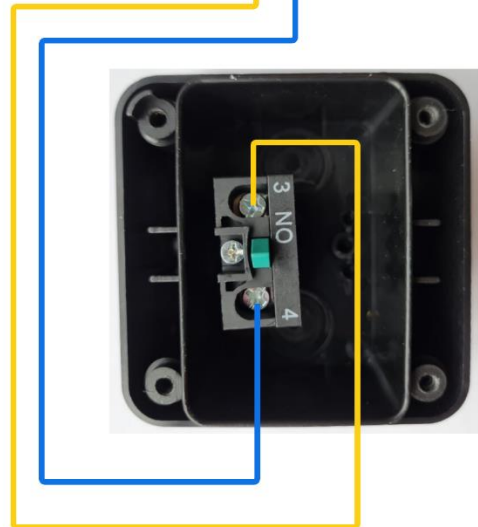


<u>GTR202 Terminal</u>	<u>GTR061/207 terminal</u>
Terminal 3	Terminal 1 (O/S/C)
Terminal 4	Terminal 4 (COM)
** No further settings adjustments needed *	

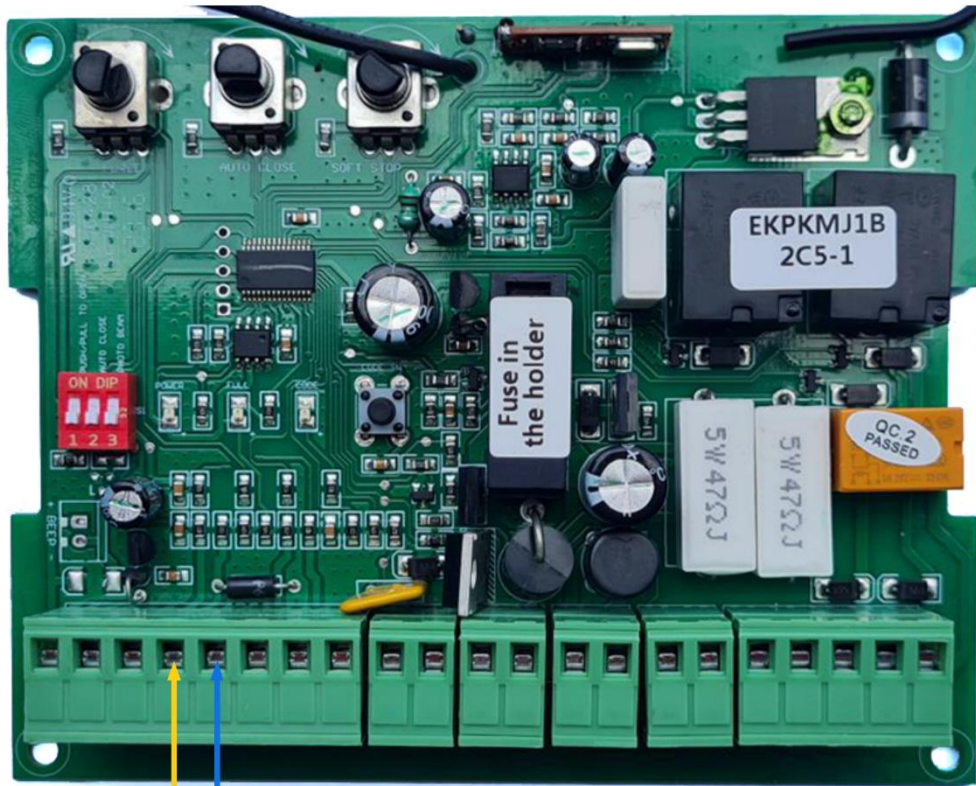
GTR058 double swing connection



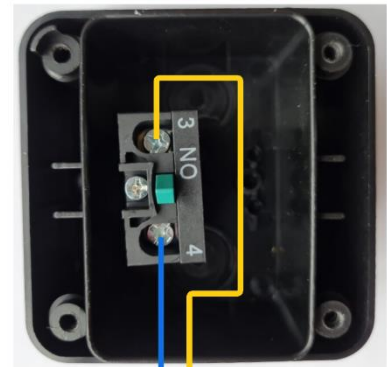
<u>GTR202 Terminal</u>	<u>GTR058 Terminal</u>
Terminal 3	Terminal 19 (O/S/C-1)
Terminal 4	Terminal 20 (O/S/C-2)
** No further settings adjustments needed *	



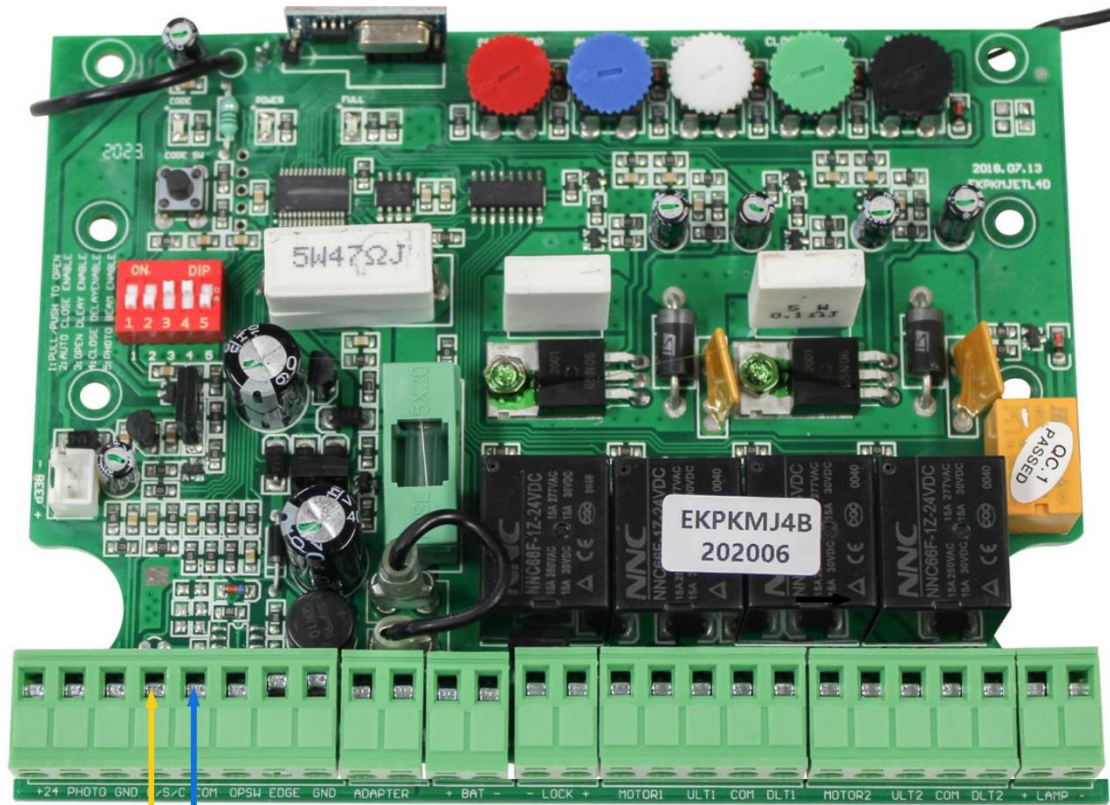
GTR099 single swing connection



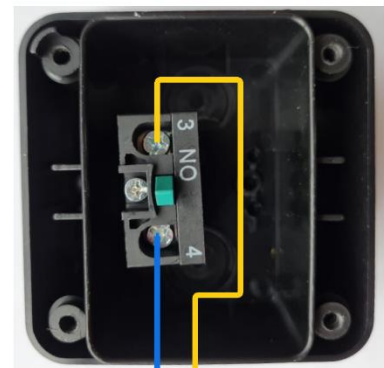
<u>GTR202 Terminal</u>	<u>GTR099 Terminal</u>
Terminal 3	Terminal 4 (O/S/C)
Terminal 4	Terminal 5 (COM)
** No further settings adjustments needed *	



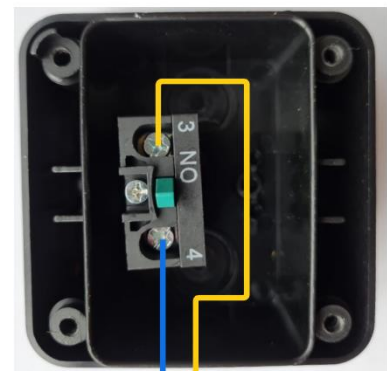
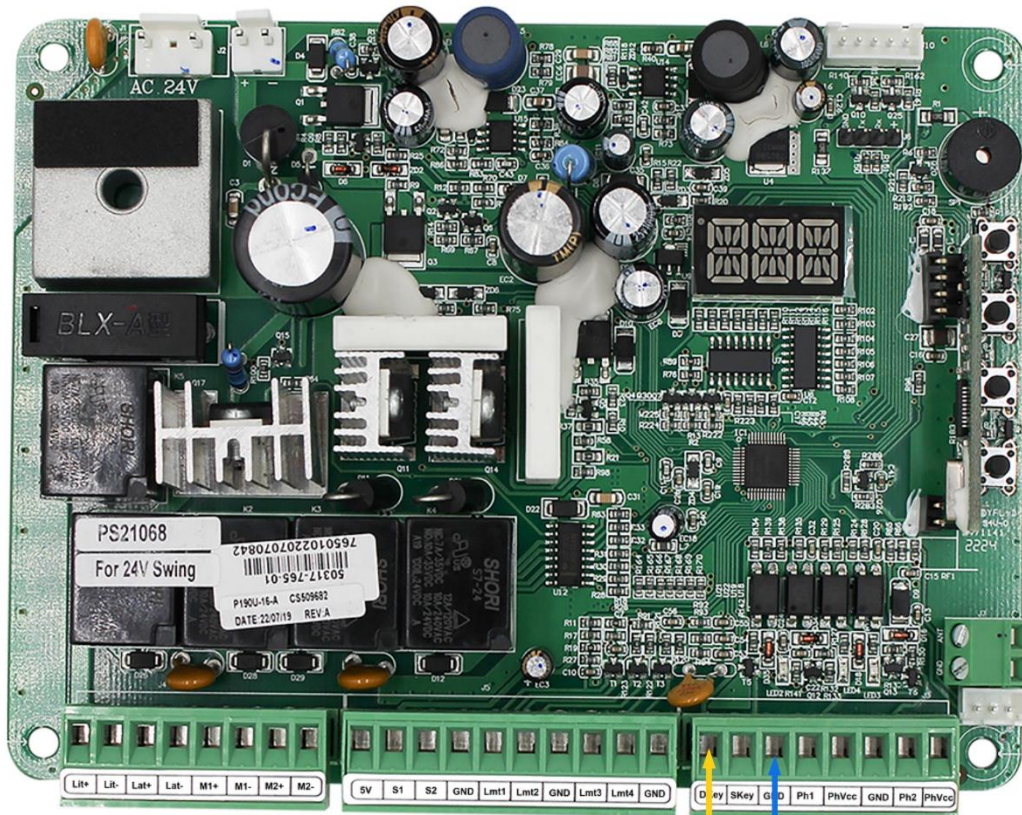
GTR062 or GTR078 solar swing connection



<u>GTR202 Terminal</u>	<u>GTR062/078 terminal</u>
Terminal 3	Terminal 4 (O/S/C)
Terminal 4	Terminal 5 (COM)
** No further settings adjustments needed *	



GTR500 to GTR503 swing and articulated connection



<u>GTR202 Terminal</u>	<u>GTR500-GTR503 Terminals</u>
Terminal 3	Terminal 19 (DKEY) or Terminal 20 (SKEY)
Terminal 4	Terminal 21 (GND)
<p>** No further settings adjustments needed * DKEY & SKEY terminals can provide extra functions. Read 'FT' and 'FU' in the installation manual for further detail.</p>	