



Battery Backup Pack for Gate Motors GTR206

Suits the Following Richmond Gate Motors:
GTR064, GTR207 GTR058



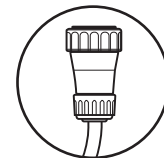
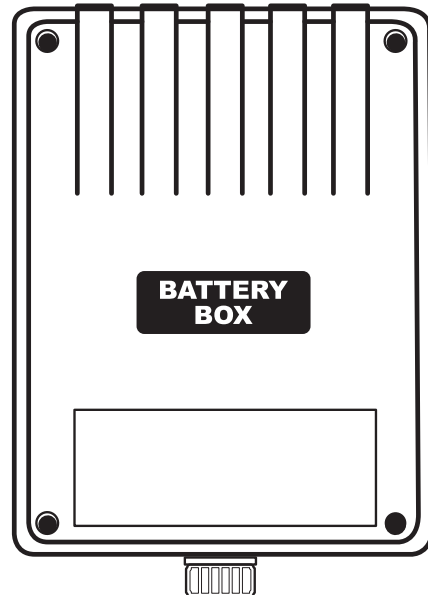
Instructions must be read before beginning installation. Please follow these instructions carefully, incorrect installation could affect gate operation. If you require more information, please contact your local Richmond Wheel & Castor Co branch.

AU: 1300 474 246 NZ: 0800 61 71 81 International: +613 9551 2233

For installation or troubleshooting assistance visit gatesupport.richmondau.com

GTR206 Battery Backup Pack: How it Works

The GTR206 battery backup pack provides you with a backup power supply to your gate motor if power is lost. While connected, the batteries in the GTR206 will continue to charge, meaning there will be no interruption to your gate when mains power is lost



IP66 rated
plugs

**2 pin plug supplied with 2m
of 2-core cable.**

Connects to the circuitboard
of your gate motor. See
following pages for
instructions

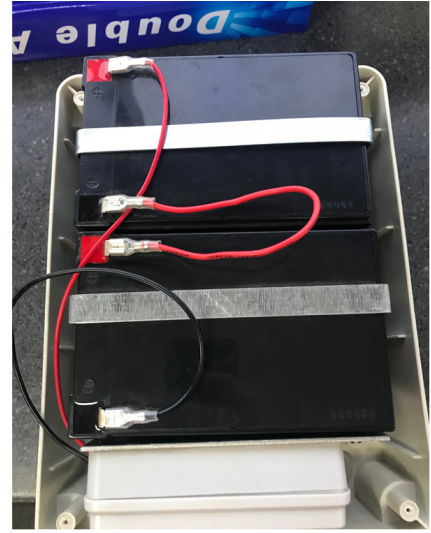
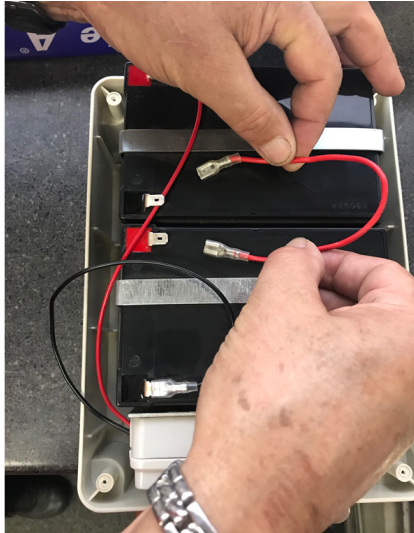
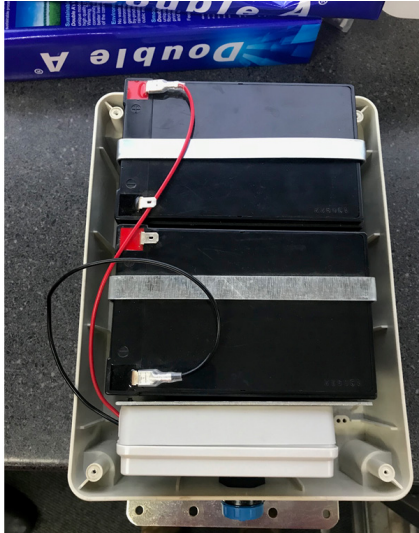
**Supplied with this box is a bag of fasteners
and a red battery jumper cable.**

This red cable is used to connect the positive and
negative battery terminals contained inside the box.
See following page for instructions.



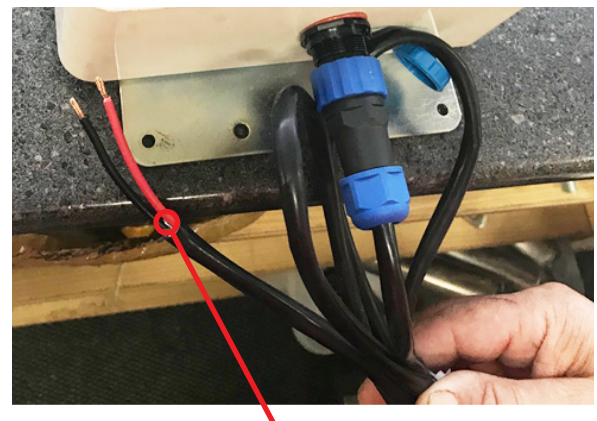
Installing the GTR206 Battery Backup Pack

1. Mount the GTR206 battery backup pack within 1.5m of your gate opener
2. Remove the plastic cover from the battery pack
3. Connect the red jumper wire to the negative and positive battery terminals as shown below:



4. Refit the GTR206 cover
5. Now you can connect the pre-stripped black and red wires to the circuit board of your gate opener and connect to your GTR206 battery backup pack using the 2-pin plug supplied

Please ensure the connecting nut for the plugs is tightened

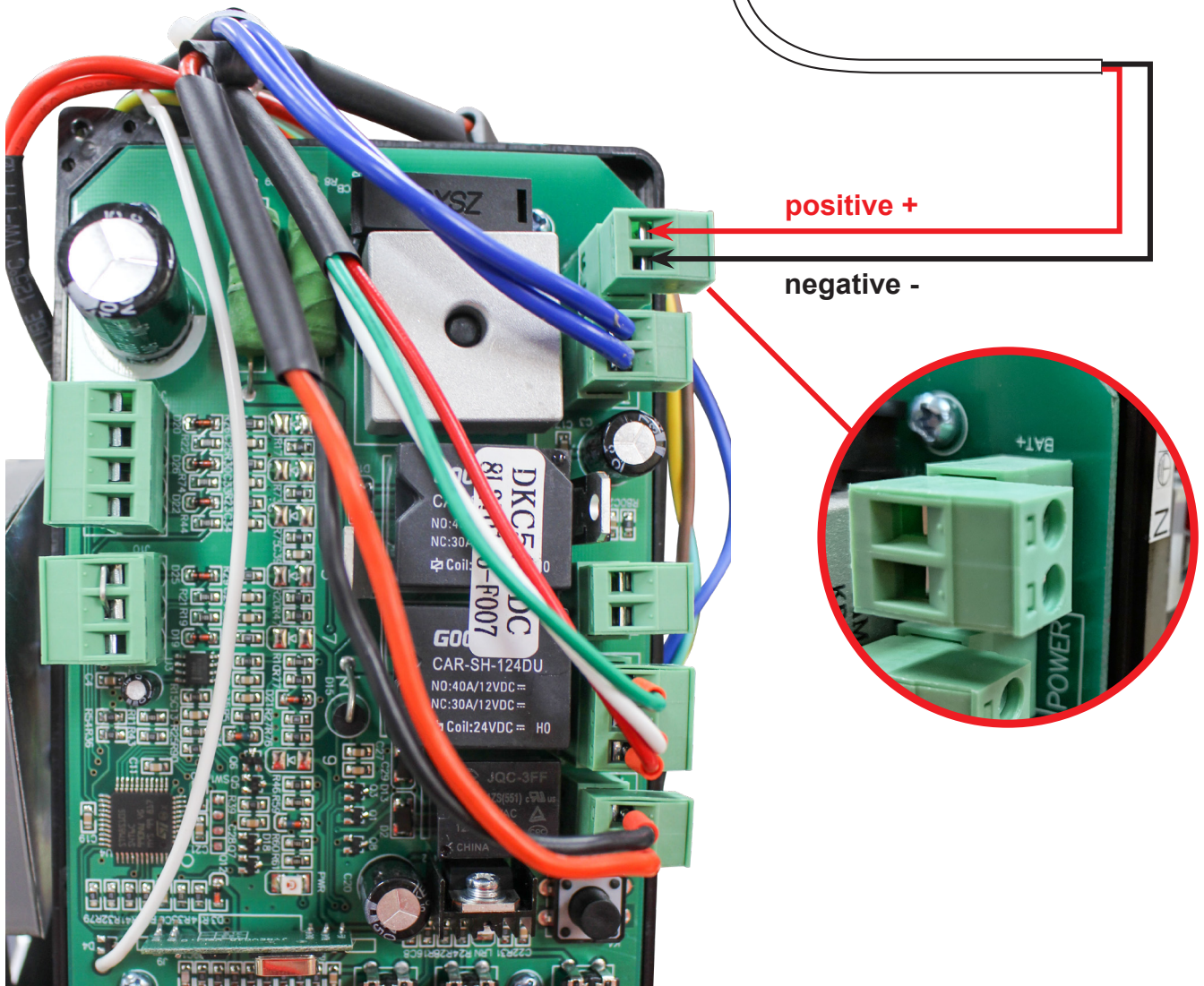
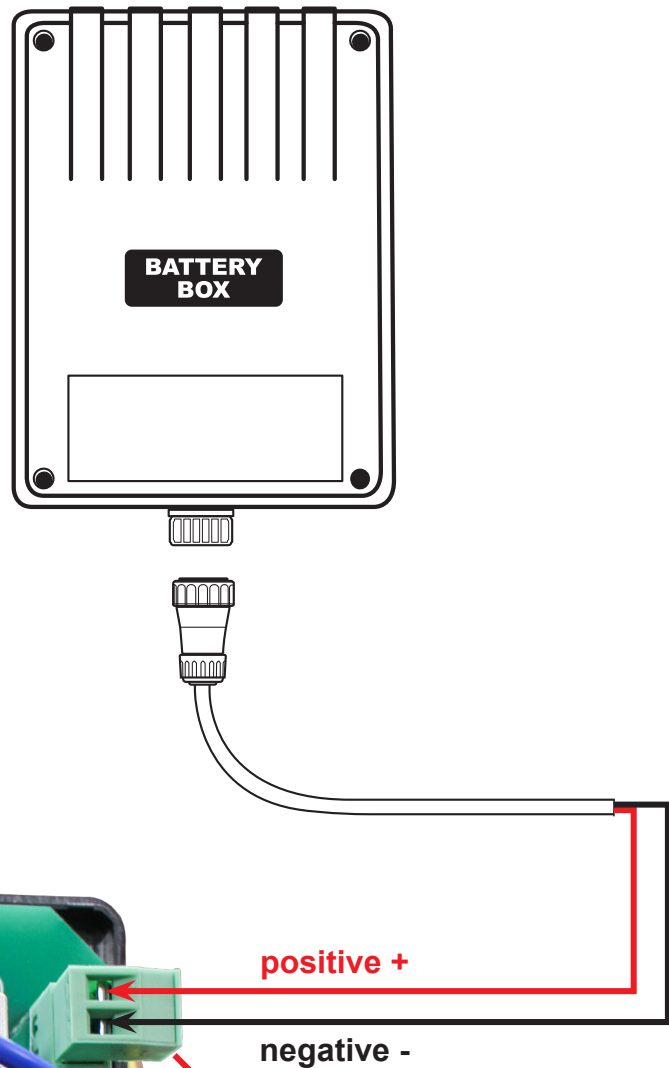


Pre-stripped black & red wires

Instructions for connecting the GTR206 to the circuit board of each Richmond gate opener in the following pages

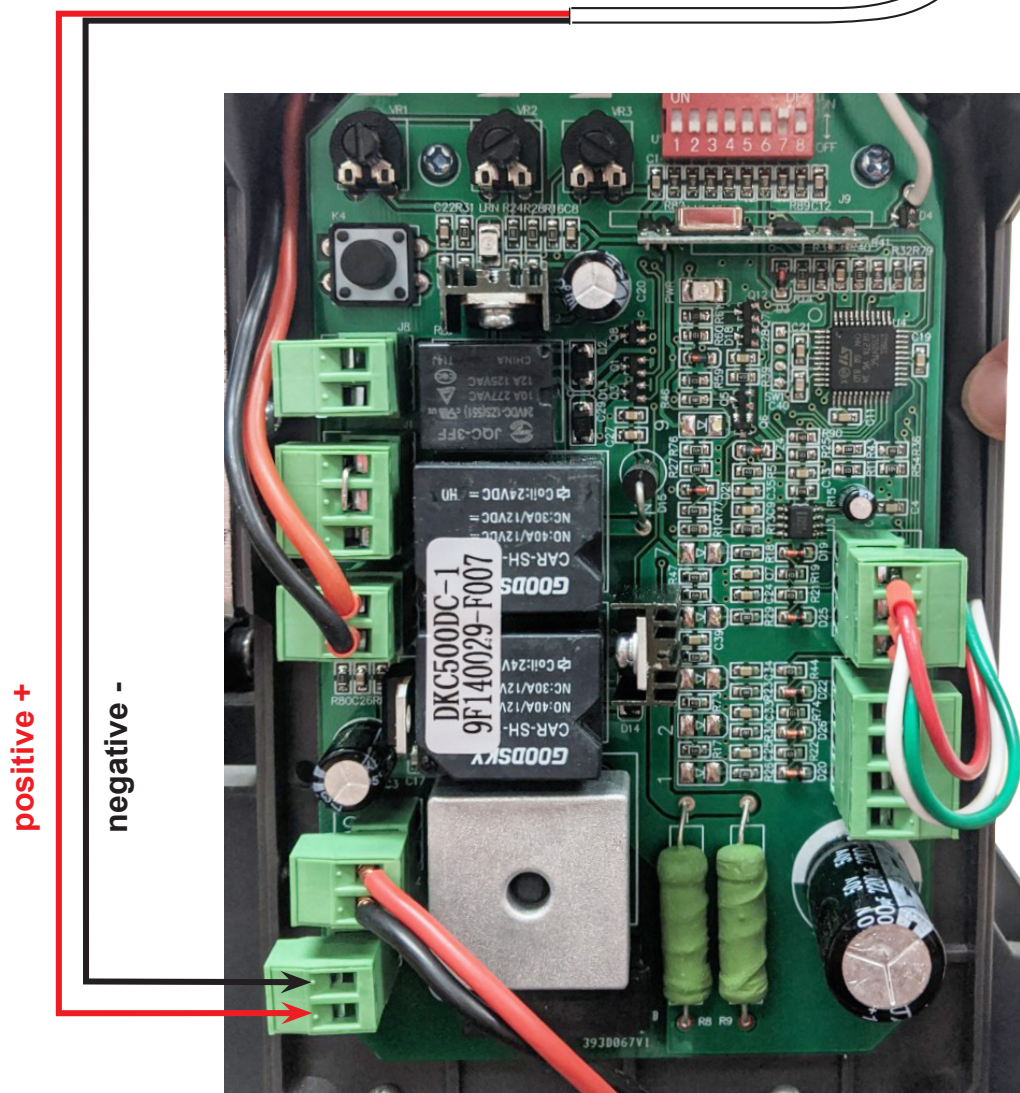
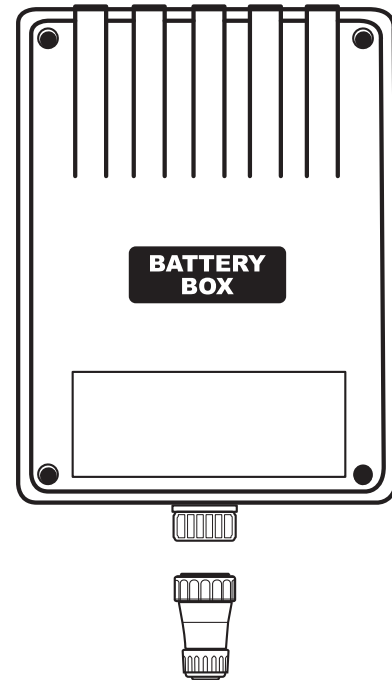
Connecting to the GTR064 Sliding Gate Motor

Connect the pre-stripped black and red wires to the **BAT terminal** of the GTR064 circuit board and then connect to your GTR206 battery backup pack using the 2-pin plug supplied.



Connecting to the GTR207 Sliding Gate Motor

Connect the pre-stripped black and red wires to the **BAT terminal** of the GTR207 circuit board and then connect to your GTR206 battery backup pack using the 2-pin plug supplied. Lastly connect the solar panel



Connecting to the GTR058 Swing Gate Motor

Connect the pre-stripped black and red wires to the BAT + and BAT - terminals of the GTR058 circuit board and then connect to your GTR206 battery backup pack using the 2-pin plug supplied.

