

Pneumatic Wheels

PLASTIC CENTRED

These steel centred pneumatic wheels are ideal for use in garden, industrial and agricultural equipment, as well as concrete mixers.

Richmond's steel centred pneumatic wheels are manufactured with one piece or three piece rims. The one piece rims are powder coated and fitted with flange ball bearings while our premium wheels are zinc plated, fitted with precision bearings and come with three piece rims offering superior strength and durability.



UP TO
200KG

NEW
MODEL

PN1668



PN8864



PN1057



PN1075



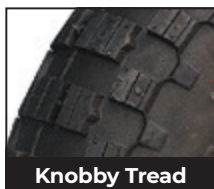
PN1610



PN1667

Nom Wheel Diameter (mm)	Tyre Width (mm)	Boss Width (mm)	Axle Diameter	Bearing Type	Tyre Size	Tyre Tread Pattern	Load Capacity (kg)	Wheel Code	
215	60	62	3/4"	Nylon Bush	2.50-4	Lug	100	PN8864	
215	60	62	5/8 or 3/4"	Flange	2.50-4	Lug	100	PN8865	
265	60	75	3/4"	6004-3/4" Ball	4.10/3.50-4	Diamond	100	PN1057	NEW
265	88	60	3/4" or 20mm	Nylon Bush	4.10/3.50-4	Diamond	100	PN1074	
265	88	60	5/8 or 3/4"	Flange	4.10/3.50-4	Diamond	100	PN1075	
420	150	106	1"	Nylon Bush	16x6.50-8	Turf	200	PN1604	
420	150	106	1"	Flange	16x6.50-8	Turf	200	PN1610	
420	150	106	1"	6005-1" Ball	16x6.50-8	Turf	200	PN1667	NEW
400	100	105	1"	Nylon Bush	4.00-8	Knobby	200	PN1603	
400	100	105	1"	Flange Ball	4.00-8	Knobby	200	PN1627	
400	100	105	1"	6005-1" Ball	4.00-8	Knobby	200	PN1668	NEW

Tread Types



Knobby Tread



Lug Tread



Diamond Tread



Turf Tread