

# TRACK WHEELS

## C GROOVE

CNC Machined from Cast Iron, K1045 Steel or SG Iron, these are for running track wheels on bars, pipes, angle iron or rope. Capacities can be increased with changes to bearing and shaft configurations.

Custom design to your specifications available.



CG459



CG462

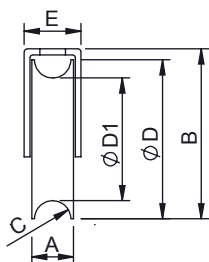
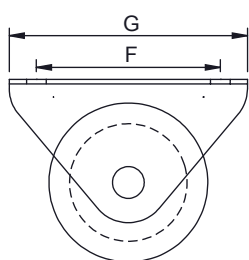


## SPECIFICATIONS

Wheel Diameter (mm)	Rim Width (mm)	Boss Width (mm)	Suit Bar	Axle Diameter	Bearing Type	Wheel Type	Load Capacity	Wheel Code
78	28	34	20	14	Ball	K1045 Steel	350	GTR006
88	28	34	20	14	Ball	K1045 Steel	380	GTR007
98	28	34	20	14	Ball	K1045 Steel	400	GTR008
100	36	41	16 or 20	3/8" or 1/2"	Ball	Ci Iron	280	CG459
116	28	34	20	14	Ball	K1045 Steel	420	GTR009

### EXTERNAL TRACK WHEEL - Capacity up to 200kg per wheel

A (mm)	B (mm)	C (mm)	D (mm)	D1 (mm)	E (mm)	F (mm)	G (mm)	Code
25	83	20	78	60	37	90	116	R329



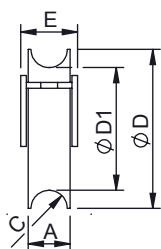
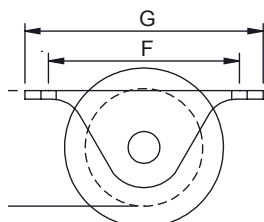
Suits 20mm Round Bar. Round profile track available from Richmond in 3 meter lengths with a zinc plated finish.



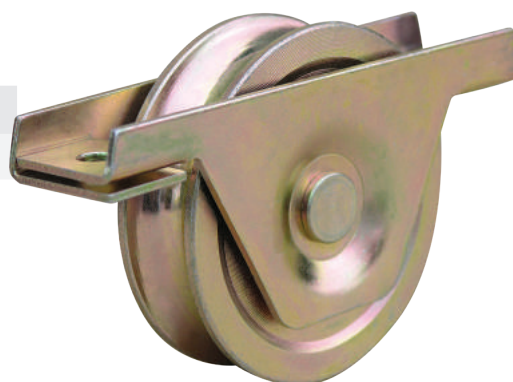
R329

### RECESS TRACK WHEEL - Capacity up to 200kg per wheel

A (mm)	B (mm)	C (mm)	D (mm)	D1 (mm)	E (mm)	F (mm)	G (mm)	H (mm)	Code
24	30	20	78	63	32	110	130	51	R331
24	37	20	88	70	34	130	155	62	R467



Suits 20mm Round Bar. Round profile track available from Richmond in 3 meter lengths with a zinc plated finish.



R467