

PLASTIC CENTRED PNEUMATIC WHEELS

Richmond's plastic centred pneumatic wheels feature a quality corrosion and rust resistant plastic rim, making them ideal for applications in wet or damp environments.

Use Richmond's plastic centred pneumatic wheels on nursery trolleys, hand trucks, agricultural equipment and more as an economical alternative to steel rimmed pneumatics.



PN1075



PN8865



PN1610

SPECIFICATIONS

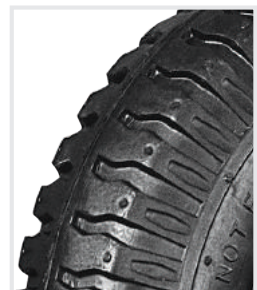
Nom Wheel Diameter (mm)	Tyre Width (mm)	Boss Width (mm)	Axle Diameter	Bearing Type	Tyre Size	Tyre Tread Pattern	Load Capacity	Wheel Code
215	60	62	3/4"	Nylon Bush	2.50-4	Lug	100	PN8864
215	60	62	5/8 or 3/4"	Flange	2.50-4	Lug	100	PN8865
265	88	60	3/4" or 20mm	Nylon Bush	4.10/3.50-4	Diamond	100	PN1074
265	88	60	5/8 or 3/4"	Flange	4.10/3.50-4	Diamond	100	PN1075
420	150	106	1"	Nylon Bush	16x6.50-8	Turf	200	PN1604
420	150	106	1"	Flange	16x6.50-8	Turf	200	PN1610
400	100	105	1"	Nylon Bush	4.00-8	Knobby	200	PN1603
400	100	105	1"	Flange	4.00-8	Knobby	200	PN1627



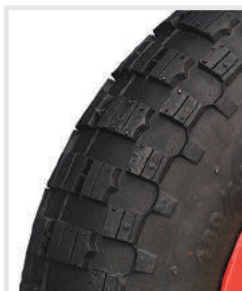
DIAMOND TREAD



TURF TREAD



LUG TREAD



KNOBBY TREAD