

300 SERIES BOLT HOLE AND PLATE CASTORS

UP TO 300KG / CASTOR










Meeting and exceeding all performance standards due to its higher load bearing capacity, the 300 Series has a wide range of uses. A sturdy pressed metal castor with a variety of wheel fitting options, it can be purchased with belt/pintle fitting or M2 plate. Richmond can also help identify the correct wheel for your application and environment.

A nylon wheel in the 300 series is most common for industrial and trolley applications, a rebound rubber wheel is ideal for road cases and transportable crates whilst a poly nylon wheel is best suited for undercover and showroom displays. Cast Iron, Poly Cast Iron and Aluminium wheels are other choices available within this series.



S5218B

SPECIFICATIONS & FITTINGS

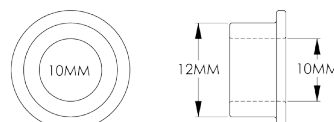
 Diameter (mm)	 Width (mm)	 Wheel Type	 Wheel Code	 Bearing Type	 Load Capacity	 Height (mm)	 Swivel Radius	 With Brake	 Bolt Size (mm)	 Swivel Code
100	35	Reb Rubber	RR4077	Ball	150/110	130	90	125	12	S4214
100	35	Reb Poly	RP4072	Roller	150/110	130	90	125	12	S4216
100	35	Poly Nylon	PU4408	Roller	200/150	130	90	125	12	S4218
100	38	Poly Ci	PU449	Ball	200/150	130	90	125	12	S4220
100	35	Nylon	NY401	Plain	200/150	130	90	125	12	S4222
100	35	Nylon	NY413	Ball	200/150	130	90	125	12	S4224
100	35	Nylon	NY403	Roller	200/150	130	90	125	12	S4226
100	35	Glass Nylon	GF414	Plain	200/150	130	90	125	12	S4228
100	36	Aluminium	AL474	AL Bronze Bush	200/150	130	90	125	12	S4230 *
100	36	Aluminium	AL473	Oilless bush	200/150	130	90	125	12	S4232 *
100	38	Cast Iron	Ci421	Plain	200/150	130	90	125	12	S4234 *
100	38	Cast Iron	Ci400	Ball	200/150	130	90	125	12	S4236 *
125	35	Reb Rubber	RR5077	Ball	200/150	157	112	125	12	S5214
125	35	Reb Poly	RP5072	Roller	200/150	157	112	125	12	S5216
125	35	Poly Nylon	PU5508	Roller	200/150	157	112	125	12	S5218
125	35	Poly Ci	PU549	Ball	200/150	157	112	125	12	S5220
125	35	Nylon	NY501	Plain	200/150	157	112	125	12	S5222
125	35	Nylon	NY513	Ball	200/150	157	112	125	12	S5224
125	35	Nylon	NY503	Roller	200/150	157	112	125	12	S5226
150	50	Nylon	NY652	Plain	300/250	181	125	150	12	S6222
150	50	Nylon	NY613	Ball	300/250	181	125	150	12	S6224
150	45	Reb Rubber	RR6677	Ball	225/200	181	125	150	12	S6228
150	40	Reb Poly	RP6072	Roller	300/250	181	125	150	12	S6216



To order castor with Swivel Lock & Brake, add B to the end of the Swivel Code, eg S4214B indicates a brake castor. Castors marked * are not available with a brakes.  Indicates castors suitable for high/low temperature applications.

CASTOR FITTING REQUIREMENTS

To fit this castor to a 20mm thick base requires a 50mm x 12mm set screw



Reduction bushes available to suit 10mm fittings, code 100RED12100BT

*Also see page 92 for Solid and Threaded pintle options